

## Krebs T-Series Classifying Cyclones

Krebs T-Series Classifying Cyclones are available in 10, 15, and 20 inch (254, 381, 508 mm) in diameter. These cyclones feature a unique lower cone arrangement that permits ultrafine separations ranging from a near 100 to 250 mesh (0.149 to 0.060 mm)  $D_{95}$  separation size – a capability that will increase your recovery. This special cone design, together with the standard Krebs involute-style entry and optional full cylindrical section, produces finer separations and allows higher feed slurry flow rates.

Exceptional abrasion resistance is achieved by using high purity alumina ceramic in the lower cones and silicon carbide ceramic in the upper sections. Alternatively, the entire cyclone can be supplied with molded urethane liners at a lower initial cost. Urethane liners can be replaced with ceramic liners at a later date for longer wear life, and reduced maintenance.

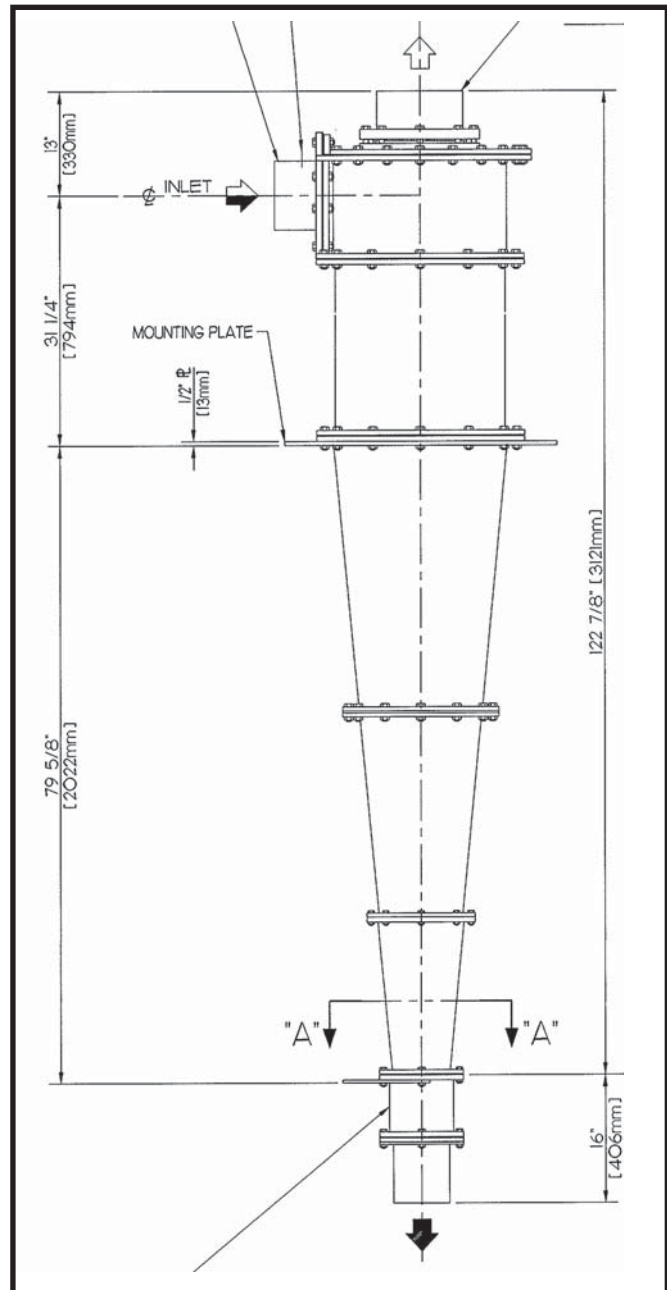
### APPLICATIONS

#### Raw Coal Classifying

Due to higher capacity the 15 and 20 inch (381 and 508 mm) cyclones are very well suited for this duty (fewer cyclones to maintain and less complex manifolds result). Usually a 15 inch (381 mm) design will be recommended if no flotation circuit is in the flowsheet.

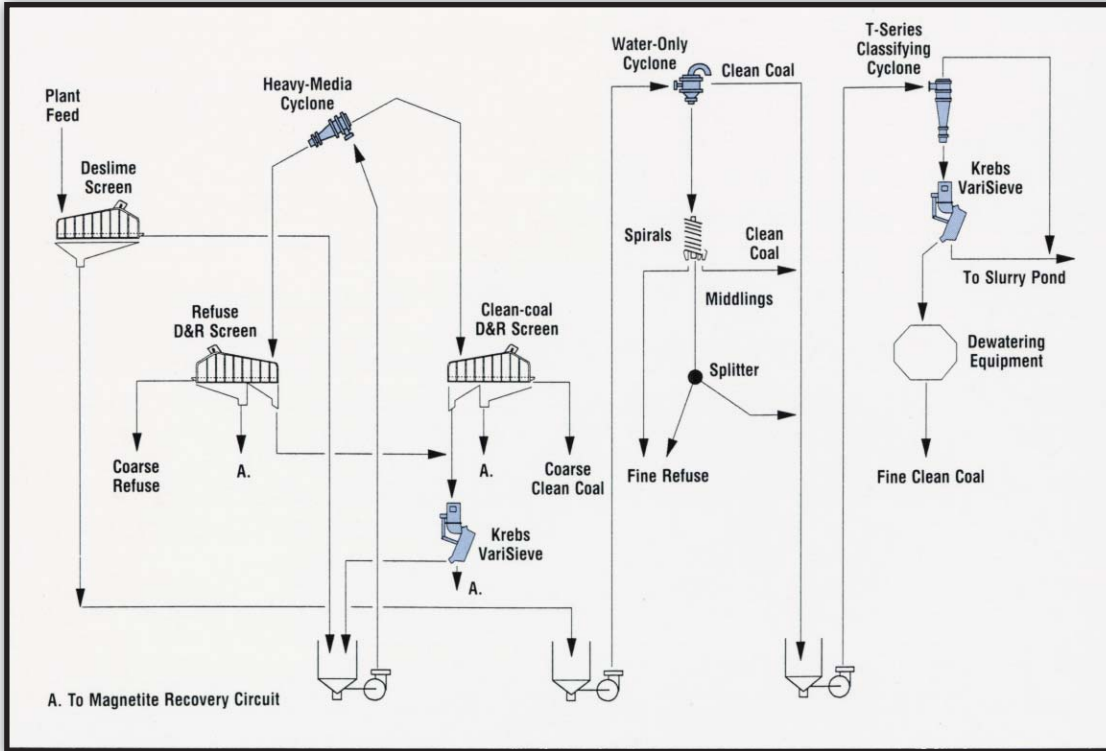
#### Clean Coal Classifying & Effluent Recovery

Due to the higher recovery rates of the 10 and 15 inch (381 and 508 mm) T-Series Classifying Cyclones, all the fine particles that are washed will be recovered from a dilute stream and transported to downstream dewatering equipment.



ABOVE: The NEW Krebs 20 inch (508 mm) T-Series Classifying Cyclone provides a near 100 mesh separation size while offering nearly twice the capacity of the 15 inch (381 mm) diameter Cyclone. This 20 inch T-Series cyclone has a 10.5° cone angle, which enables the cyclone to produce a finer separation at higher volumetric capacity.

# 3-201



**ABOVE:** The flow diagram shows a Krebs T-Series Classifying Cyclone used in combination with a Krebs VariSieve to recover and dewater fine clean coal and remove slimes. Krebs Heavy Media and Water-Only Cyclones are also used in combination with additional equipment to process and clean coal in other stages by making specific gravity separations. The Krebs VariSieve is a fine-aperture sieve designed to clean, classify, and dewater fine coal at 100 to 200 mesh.

**Customer Service**

At FLSmidth, we take pride in the service and support we offer our customers in technical assistance, parts inventory, and product quality. We are dedicated to delivering the highest quality equipment backed by the highest level of technical service and support.

Krebs' engineering staff specializes in all types of separation and classification processes in a wide range of industries. You can depend on Krebs to provide responsive service and expertise when you need it.



**Call for More Details . . .**

FLSmidth Krebs can analyze and recommend cyclones for all coal classification and separation applications. Contact our applications engineering group as every application is different and we are ready to help you improve your operations.

**MAIN OFFICE**

5505 West Gillette Road  
Tucson, Arizona 85743 USA

TEL (520) 744-8200

FAX (520) 744-8300

EMAIL [krebs@krebs.com](mailto:krebs@krebs.com)